

Baulkham Hills

 4 bedrooms  4.5 bathrooms  Double Garage  236.60 Sq M



TYPE D

INCLUSIONS:

Fixed site cost and BASIX;
2600 mm ceiling ground floor;
Ducted air conditioner;
Down-light package to
Kitchen/Living;
Caeserstone kitchen bench top;
Carpet to bedrooms;
Tiles to Living areas;
Mirrored Sliding robes;
Clothes line and Letter box;
Turf front and backyard;
Colored driveway;
Six months completion;



KEY FACTS

- ✓ Double storey
- ✓ 4 bedrooms
- ✓ Study
- ✓ 4.5 bathrooms
- ✓ Double Garage
- ✓ 236.60 Sq M
- ✓ Exterior width 7.50m
- ✓ Exterior length 15.80m



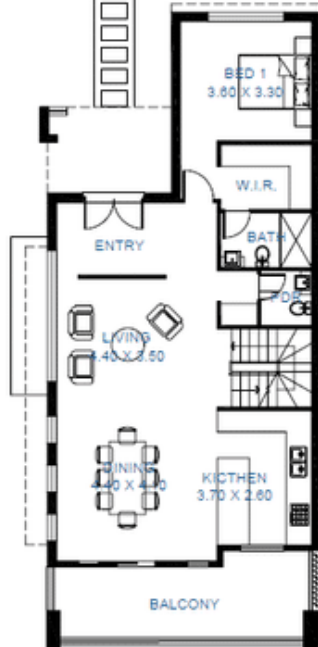
FLOOR AREAS

Lower Ground	70.20 sqm
Ground Floor	85.70 sqm
First floor	80.70 sqm
Garage	30.25 sqm

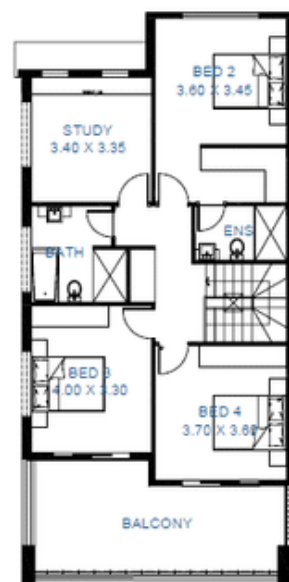
Total Floor Area 236.60 sqm



Lower Ground



Ground floor



First floor

7.50 M

15.80 M